

Meyer Burger Tile

# The solar roof tile in Meyer Burger quality

## Distinctly aesthetic

Visually fully integrated. Suitable for all types of tiled roofs and complex architecture.

## Incredibly flexible

Utilizes even small and complex areas efficiently and adapts to different roof shapes.

## Heritage protection approved

Preserves the historical appearance and is more easily approved due to its discreet integration.

## Extremely light and durable

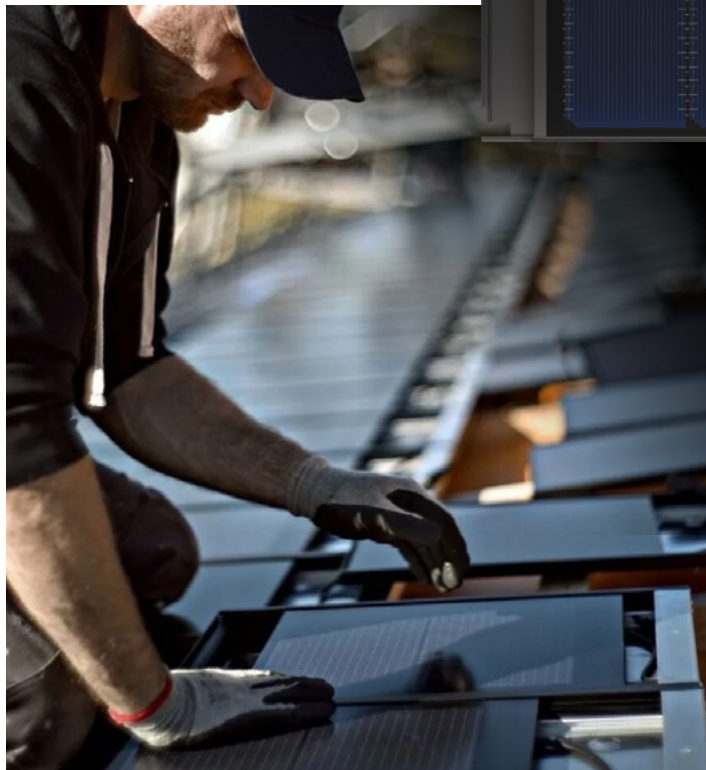
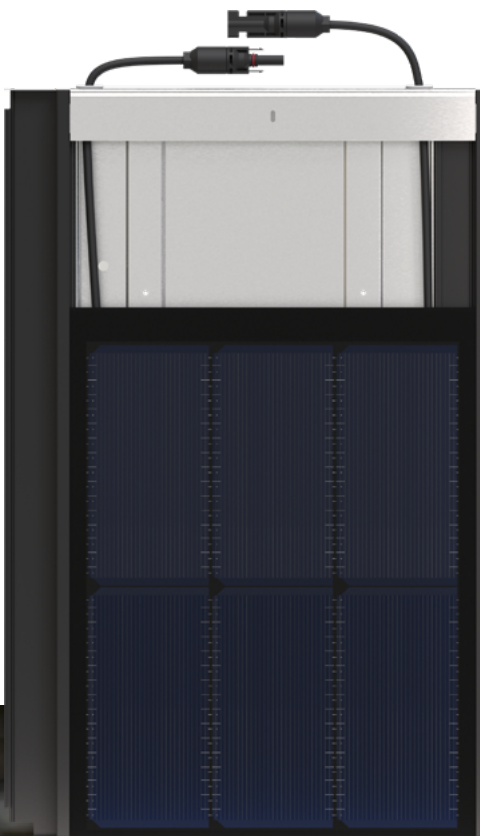
Waterproof, hail-proof, classified as a "hard roofing" material, and lighter than a roof tile, without any structural risk.

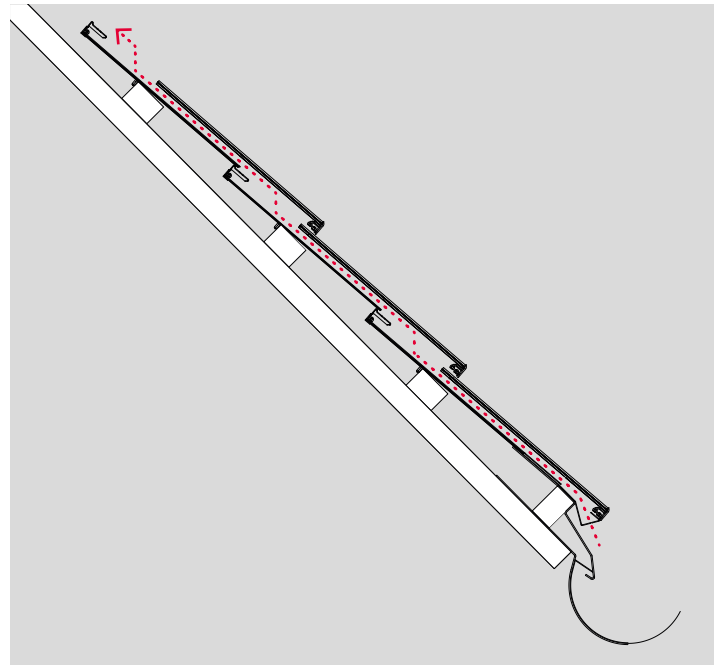
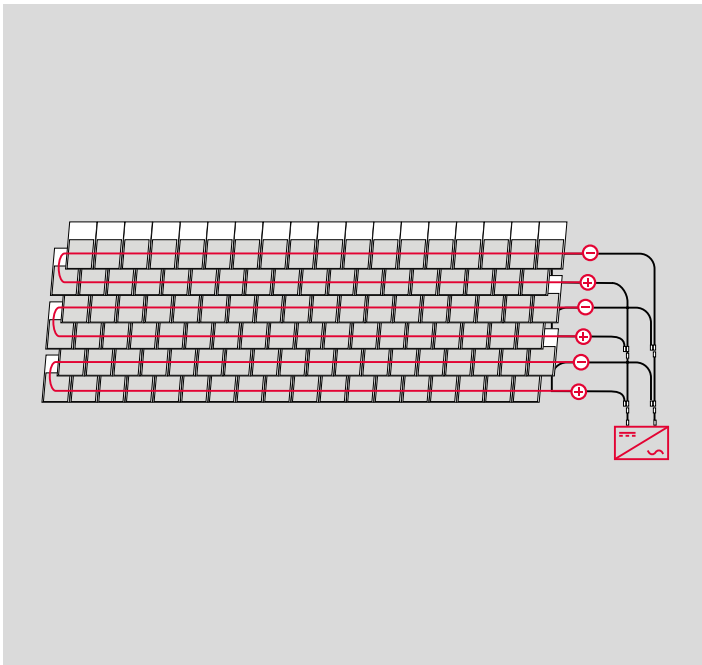
## Simply simple

Feather-light with an elegant design, compatible with numerous roof tiles from various manufacturers, installable in rows or offset, can be installed without any prior electrical knowledge.

## Guaranteed reliable

Impressive product and performance guarantees of 30 years.





## Connected in series, to stand out

Installed like conventional roof tiles and connected in a flash: The series connection of Meyer Burger Tiles simplifies installation significantly and starts at the eaves. This saves time and effort during roofing, effortlessly transforming even the most irregular and challenging roofs into a powerful, nearly invisible solar power plant.

## More than just hot air

The double housing of the Meyer Burger Tile ensures optimal ventilation. During installation, a continuous air channel is created. This promotes a chimney effect, which helps cool the solar roof tiles from the backside.

## Technical Details

<b>Solar cell type:</b>	6 half-cells, mono n-Si, HJT with SWCT®	<b>Cabling:</b>	Horizontal stringing
<b>Tiles per m<sup>2</sup>:</b>	10	<b>Screw connection:</b>	Mounting with 4 screws
<b>Rated power:</b>	17.0 Wp per Tile	<b>Special complementaries:</b>	Snow guard holder, roof step etc.
<b>Dimensions in total:</b>	521.2 x 334.0 x 26.3 mm	<b>Certificates:</b>	General building inspectorate test certificate (abP), fire protection class / B <sub>ROOF</sub> (f1) (EN 13501-5), hail test with 55 mm hailstone according to IEC 61215 (MQT17), mechanical load test: + 12,000 Pa, Certifications applied for: IEC 61215, IEC 61730
<b>Weight:</b>	2.8 kg		
<b>Front cover:</b>	Solar glass 3.2 mm, textured		
<b>Back cover:</b>	Floatglas 3.0 mm		
<b>Roof battens/ substructure:</b>	Requirements according to manufacturer's specifications for complementary bricks e.g., Braas Tegalit, Nelskamp Planum, Creton Kapstadt		

All data and specifications are preliminary and subject to change at any time.  
Source: Datenblatt Meyer Burger Tile Stand: MB\_BF6AyBT\_17\_Version Q3\_2024\_V3\_en

## Get in touch

Our experts are available for a personal consultation regarding the Meyer Burger Tile

[sales@meyerburger.com](mailto:sales@meyerburger.com)

